

Pesmel
The Material Flow How[®]
company

PESMEL

The Material Flow How® company

Pesmel is a specialist in innovative material flow solutions helping the industrial customers to rethink and renew their logistic chain.

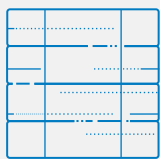
Over 40 years' in operation we have provided hundreds of successful projects based on our Material Flow How® concept. This provides total automated systems including packing, internal logistics and high-bay storage integrated with proprietary system software and Warehouse Management System. The concepts not only optimize internal logistics but also make the external logistics chain more efficient.

Our competitive edge lies in the capability of delivering total systems that include simulation and solution modelling for mills, system engineering and complete technology and software systems.

Managing material flows inside the mill offers significant potential for enhancing overall mill operations. The main idea of integrated logistics is to effectively eliminate bottlenecks between processes and to ensure smooth material flows throughout the facility. Our systems are tailored, based on the customer's processes and requirements.



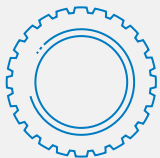
Paper



Pulp



Metals



Tires

Smooth and effective in-mill logistics and optimization of finishing area operations bring various benefits:

Mill operations

- High availability and flexibility to run main mill processes
- Quick turnover from raw material to shipping
- Real time control and visibility of material inventory
- Improved space utilization
- Predictable handling capacities
- Improved operational safety

Customer service and cost effectiveness

- Shortened throughput times
- No errors in deliveries, no damages to products
- Reduced operational costs
- Optimized inventory for raw material and semi-finished products
- Increased sales and shortened invoicing time

Customer reported results from
Material Flow How® vs. traditional solutions:

15%

increase in sales due to shorter
delivery times

0

lost orders,
shipment/handling errors



30%

savings in packing materials

7 day

reduction in invoicing times with
integrated software



65%

space savings compared to
traditional storage

10%

increase in mill efficiency

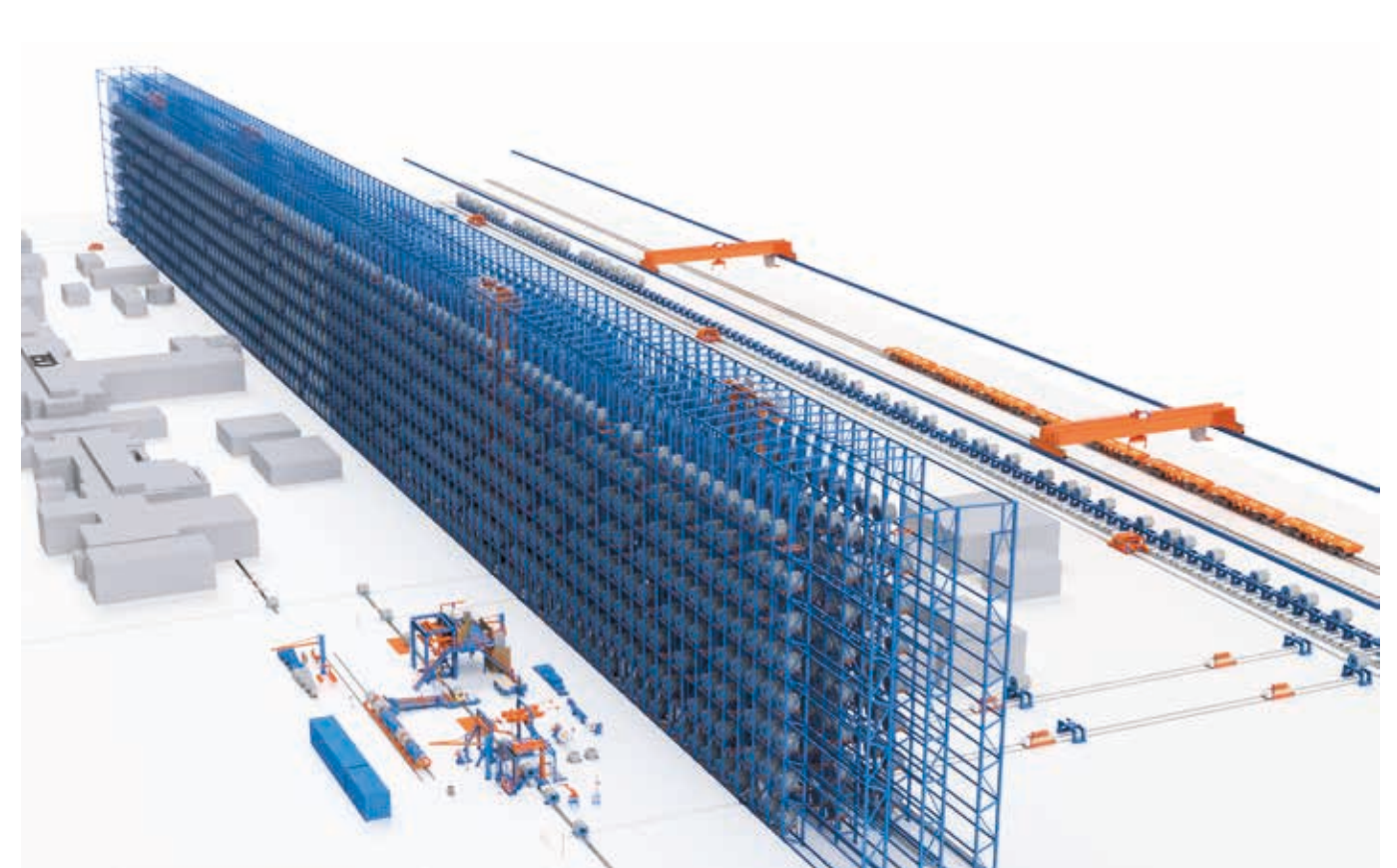




Pulp & Paper

Pesmel has a long history in serving the pulp and paper industry. Our storing, retrieval and packing systems have been developed for materials like pulp, paper, board and self-adhesives.

Pesmel's Material Flow How® -concept provides mills with fully automated and optimized material handling and logistics. It is applicable for paper rolls, pulp bales and pallets.

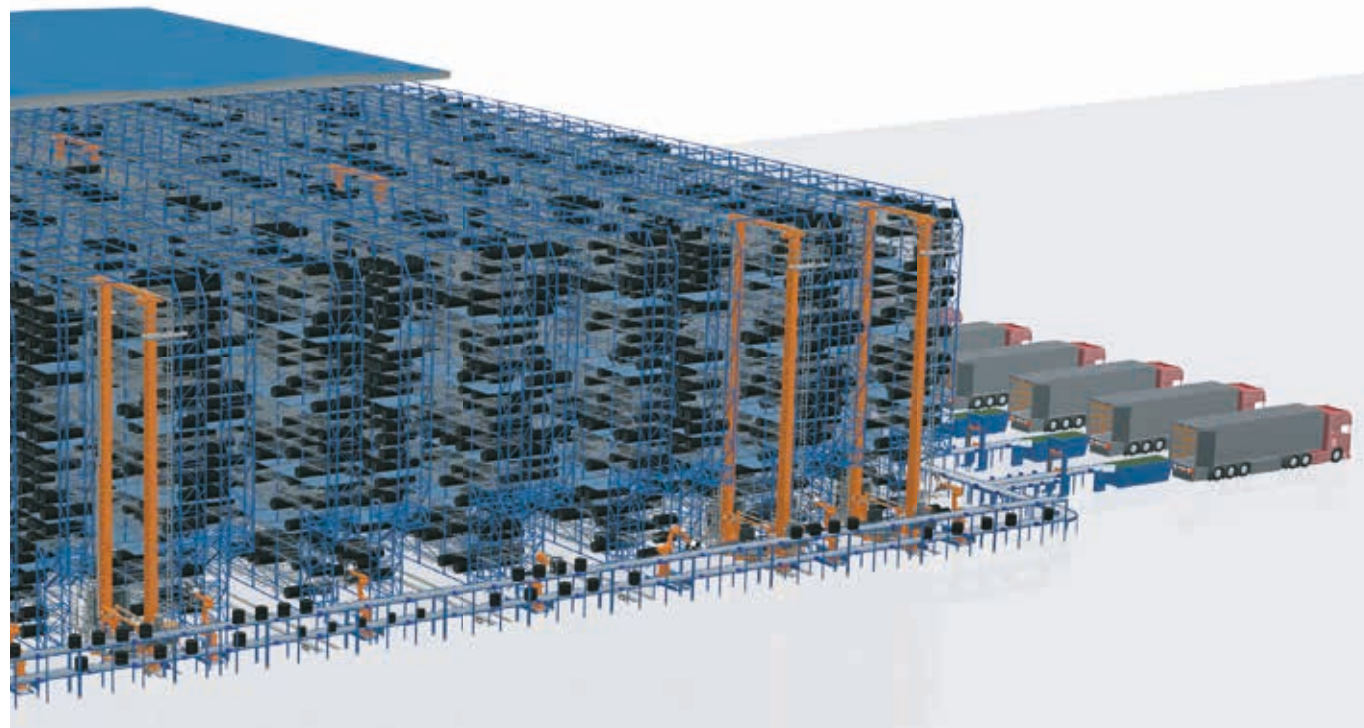


Metals

The Material Flow How® -concept provides a single source for internal logistics functions of ferrous and non-ferrous mills and distribution centers. It serves processes like cold rolling, annealing, galvanizing, coating, slitting and cutting.

The concept includes handling, storing and packing functions, and it is designed for coils, sheets, plates, strips and wire rod.





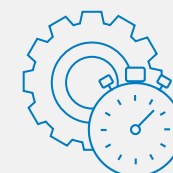
Tires

Pesmel has delivered conveying, packing and loading systems to the tire industry since the beginning of the century. More recently Pesmel has launched the fully automated storing and retrieval system TransTire, now part of the Material Flow How® family.

The innovation, based on high bay storing and logistics technology, allows operation without pallets, resulting in integrated and simplified tire handling, storing and distribution functions.



Support across the entire lifecycle



Maintenance

Regular maintenance guarantees high availability and extends the lifetime of the system. Preventive maintenance minimizes unexpected repairs and helps to keep total investment and operational costs in balance.



HelpDesk

Our HelpDesk service is there for our customers 24/7 ensuring reliable performance of the process and equipment. When you need assistance, our specialist will help you over the phone or establish remote access to your control system for immediate troubleshooting.



Spare parts

We provide comprehensive spare part services for material handling systems. Spare and wear part recommendations are made for every delivery project. Pesmel's spare part services guarantee the latest, best quality spare parts available.



Upgrades

Frequent upgrades help extend the lifetime and improve the profitability of your original investment. Our R&D regularly generates new innovations and cost-effective upgrade packages for improving e.g. system throughput and capacity, operational safety or the performance of the control system software.



FlowCare

FlowCare is a remote supervisory and preventive maintenance solution for production facilities. The custom-built solution monitors the performance of all Pesmel equipment. Important data is visualized in a web portal that can be easily viewed on a computer or any personal mobile device.

Pesmel Oy
P.O.Box 14 (Päntäneentie 3)
FI-61801 Kauhajoki, Finland
pesmel.com

PESMEL